

The logo consists of the letters 'JB' in a bold, blue, sans-serif font. The 'J' and 'B' are connected at the top.The word 'ENGINEERING' is written in a blue, sans-serif font inside a white, rounded rectangular box with a gear-like border. Two grey gear icons are positioned on either side of the text.The background of the entire page is a collage of industrial material handling equipment. The top half shows a complex system of blue conveyor belts and chutes, with a large pile of dark grey material on the right. The bottom half shows a long, curved conveyor belt covered with a dark, textured material, set against a yellow industrial structure. The overall scene is a busy industrial facility.

COMPANY PROFILE

GET YOUR BEST POSSIBLE
MATERIAL HANDLING SOLUTION....

JB Engineering is specialist in timeliness delivery and Solutions of Material Handling, It's spares and services which help to improve clients engineering efficiency, support their global footprint and improve their competitiveness. Our robust work planning methodology to ensure an effective delivery model for engineering services.

We have many years of experience for manufacturing, erection, commissioning, services in various industries like Food Industries, Textile Industries, Waste Management, Oil Industries, Port Handling, Chemical Industries, Cement Industries, Paper & Pulp, Pharmaceutical, Sugar, Soap Plant.



Our Mission

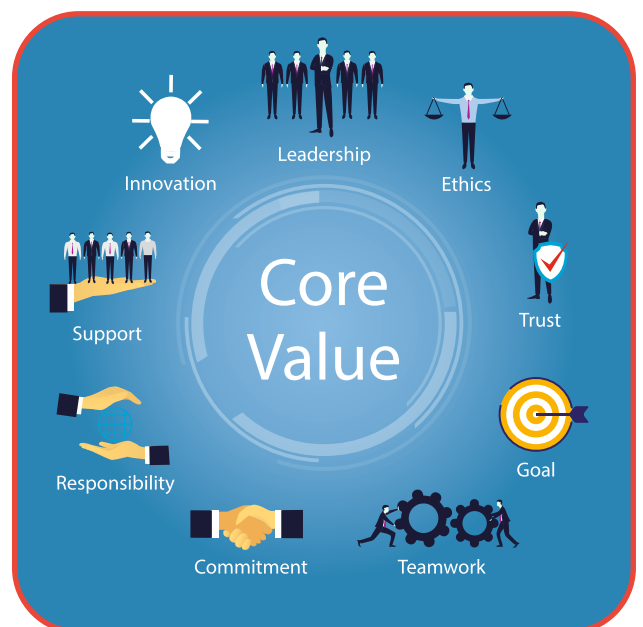
JB Engineering is focus on cost efficiency and product reliability and high performance through :

- ◆ Surpassing customer's expectations of quality and delivery.
- ◆ Innovation towards customer's original requirement.
- ◆ Empowered and enthused work environment.



Our Vision

- ◆ To increase customer engineering efficiency.
- ◆ Long lasting relationship.
- ◆ Benchmark to manufacturing of material handling equipment.



Industries We working for



Food Process



Textile Process



Waste Management



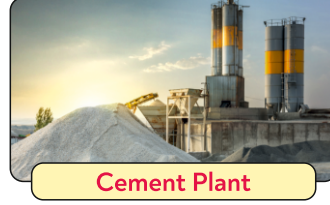
Oil Processing



Power Plant



Chemical Process



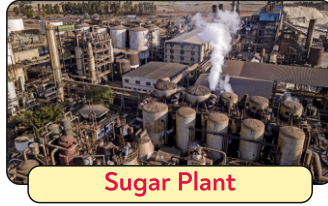
Cement Plant



Paper & Pulp



Pharmaceutical



Sugar Plant



Soap Process

Range of Activity

- ◆ Material Handling System
- ◆ Material Handling Equipment Supply
- ◆ Material Handling Spares and Services
- ◆ Technical Support

Clients or End Users

- ◆ Ultratech Cement Limited
 - ◆ Godrej Industries Limited
 - ◆ JRD Denims Limited
 - ◆ ME Energy Private Limited
 - ◆ Rakhoh Boiler Private Limited
 - ◆ Sempra Electric Private Limited
 - ◆ Jinharsh Industrial Solutions Private Limited
 - ◆ Omya India Private Limited
 - ◆ Par Techno Heat Private Limited
 - ◆ Chhabee Nutricous LLP
 - ◆ Blue Wings Construction Private Limited
 - ◆ Creative Alcoats Private Limited
- and many more... !

Material Handled

- ◆ Coal
 - ◆ Lignite
 - ◆ Briquette
 - ◆ Wood chips
 - ◆ Lime
 - ◆ Cement
 - ◆ Gypsum
 - ◆ Clay
 - ◆ Slag
- and many more.....



Product Range

Equipments



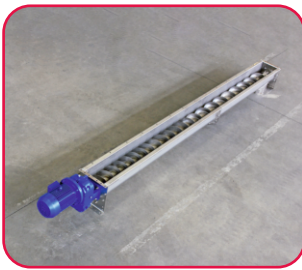
Belt Conveyor

Belt Conveyors are components used in automated distribution of material from one place to another place various size of belt conveyor are available



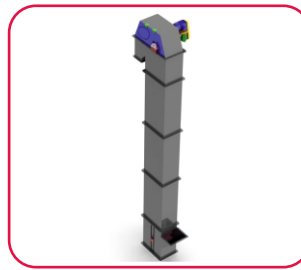
Roller Conveyor

Roller Conveyor systems are commonly used in many industries including Automotive, food processing, pharmaceutical, chemical, packaging, warehouses to handle carton, boxes with powered and non powered type roller conveyor are available



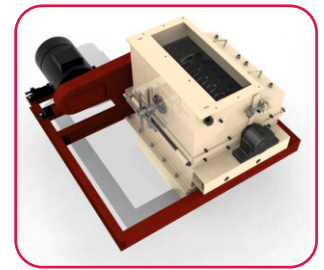
Screw Conveyor

Screw Conveyor usually consist of a trough or tube containing either a spiral blade coiled around a shaft, driven at one end and free at the other.



Bucket Elevator

Bucket Elevator can elevate a variety of bulk materials from light to heavy and from fine to large lumps. A centrifugal discharge elevator may be vertical or inclined. Vertical elevators depend entirely on centrifugal force to get the material into the discharge chute



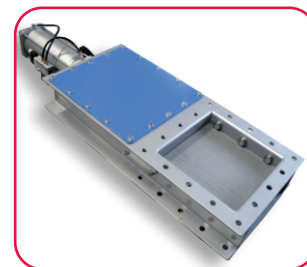
Crusher

Crusher is a machine designed to reduce large rocks into smaller rocks, gravel, sand or rock dust. Crushers may be used to reduce the size, or change the form of materials so they can be more easily recycled, or to reduce the size of a solid mix of raw materials



Rotary Air Lock Valve

The valve is used to regulate the flow of a product or material by maintaining a consistent flow rate suited to the process. Controlling the flow of material helps to prevent issues such as jamming, material leakage and damage to the valve itself



Slide Gate Valve

The size of the open flow path generally varies in a nonlinear manner as the gate is moved. This means that the flow rate does not change evenly with stem travel. Depending on the construction, a partially open gate can vibrate from the fluid flow

Product Range

Material Handling Spares



Conveyor Carrying Roller

Carrying roller are utilized to provide support to the conveyor belt and are fitted on the notch frame, transition idler frame and groove shape forward slanted idler frame.



Conveyor Impact roller

The conveyor impact rollers are also called shock absorbing rollers. Its mainly consists of a base steel roller design which has fitted ring on it because of this special design to resist and absorb the pressure given by the impact of material onto the belt.



Carrying Roller Frame

Carrying roller or impact frame 3 roll type design having various size are available



Conveyor return roller and its frame

Conveyor return roller are installed on the side under the conveyor to provide support to the returning conveyor belt. These conveyor return roller are designed to enable use as carry idler and support the conveyor belt from below in a flat belt situation. Based on customer requirement various size and type of return roller supply

Other Conveyor Spares



Conveyor Pulley



Conveyor Chain & Sprocket



Elevator Bucket



All type of Belts



**Safety Switches
Pull Cord Switches
Zero Speed Switches
Belt Sway Switches**

Other Automation Instrument

◆ Solenoid Valve

◆ Level Switches

◆ Proximity Sensor

◆ Pulse Jet Valve

◆ Safety Switches

◆ Pressure Switches

And many more.....

Service Range

Services

Industrial Maintenance Services

JB engineering provided industrial Maintenance services involves functional checks, servicing, repairing or replacing of necessary devices, equipment, machinery and supporting utilities in industries Maintenance activity such as testing, measurements, replacements, adjustments and repairs intended to retain or restore a function unit. All supply and repair action taken to keep a force in condition to carry out its mission.

Fabrication Work

- > Manufacture & Assemble of Chutes
- > Fabricate & Erection of Steel Structures
- > Supply & Installation of Roof Sheeting
- > Bending of Steel Plates
- > Rolling of Steel Plates
- > All type of Welding
- > All type of Fabrication

Turnkey Work

JB Engineering is also doing turnkey project work including Shed Work, Machinery Installation, Fitting, Erection, Electrical Cabling.

Electrical and Instrumentation Work

JB Engineering is provided experienced electrical and instrumentation team for any project work or maintenance work or supply.

Project Execution Work

**GET YOUR BEST POSSIBLE
MATERIAL HANDLING SOLUTION....**



Completed Projects



◀ Gopal Snaks Pvt. Ltd., Rajkot.



◀ CALDERYS INDIA
REFRACTORIES LTD



◀ Chhabbee Nutricos LLP, Surat.



◀ Louis Dreyfus Company (LDC), Kutch





Mobile : 8306405105 /8980017100

Gmail : info@jbenigneering.in

Address : 8, FF, SUMANGAL SHOPPING CENTER,
VARACHHA MAIN ROAD, SURAT-395006.

Website : www.jbenigneering.in



Designed by :
Vimal Vanani
CREATIVE INC.

Printed by :
VALLABHI
SINCE 1990
QUALITY WORK ONLY

